

INTENSIVE CARE
UNIT



HIBUSI
welcomes you among us!

St-Elisabeth site
Intensive care unit

CLINIQUES
DE L'EUROPE

EUROPA
ZIEKENHUIZEN

advanced care - personal touch

WELCOME TO THE INTENSIVE CARE UNIT

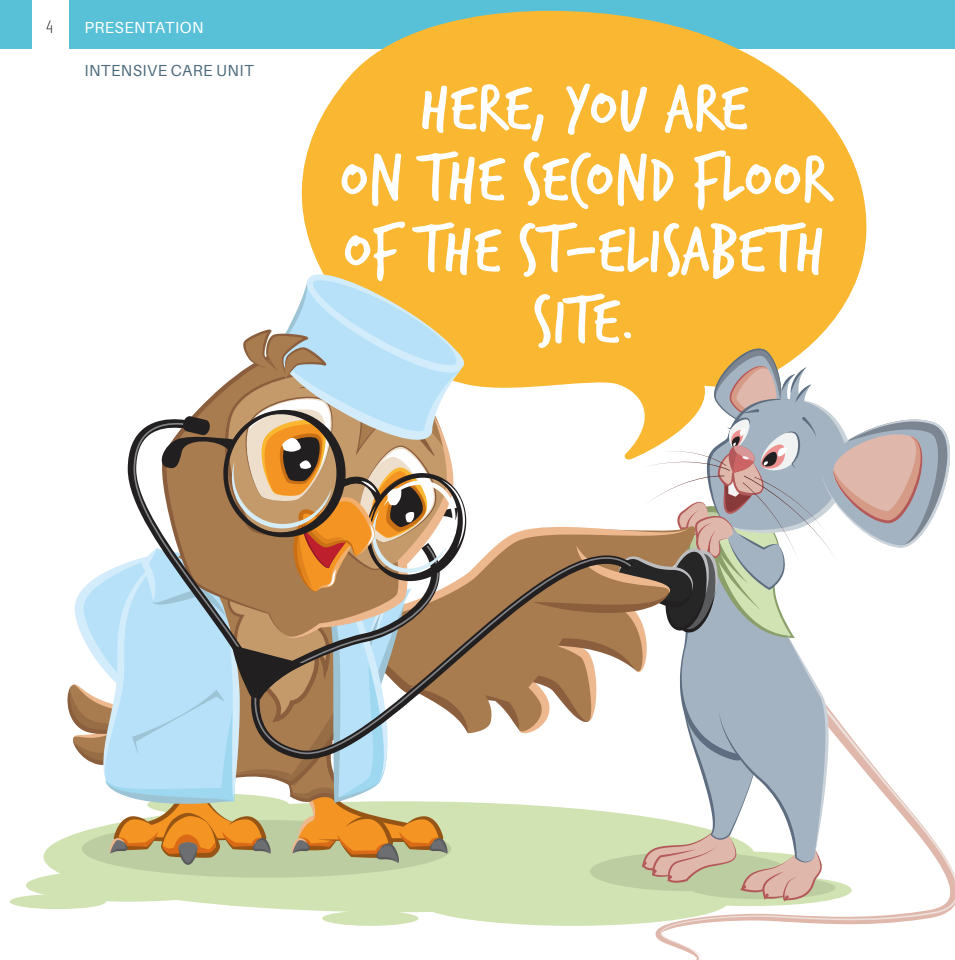
☎ 02 614 26 20

HI! NICE TO MEET YOU, I'M HIBUSI
I'M HAPPY TO WELCOME YOU!

I'm in charge to explain you what you will experience during your stay.

Chief doctor: **Dr Clause**
Head nurse: **Bailly Antoine**





Normally you came here taking the elevator and you are now in front of two closed doors.

All the visitors have to ring the bell in order to enter the Unit... Do you know why?

Because here in the Intensive Care Unit there are only gravely injured patients. Since they need a lot of care and attention, **visitors have to follow the visiting hours and the rules of the medical team:** properly disinfect the hands, don't run in the hallway, don't make noise which would disturb the sleeping patients.



They are supported in their work by impressive machines; you may sometimes hear intriguing sounds and see curves and lines of different colors on the screens.

A real show! A little strange but very useful!

Don't hesitate to ask us questions or to the people you came with; it's always cool to be able to share your impressions!

Let's go into a room together!

It's time for visits: **from 14:30 to 15:30 and from 18:30 to 19:30.**

EVERYWHERE SMALL PIPES AND WIRES!

They bring air and medicine to the patient and are also useful for taking blood samples.

MONITORS

watch out the heart, breathing, blood circulation and temperature of the patient.

EACH FUNCTION

represented by a colored line on the screen.

SYRINGE PUMP

distributes medication the patient can not swallow alone.

THE OXYGEN MASK OR NASAL PRONGS, THE VENTILATOR...

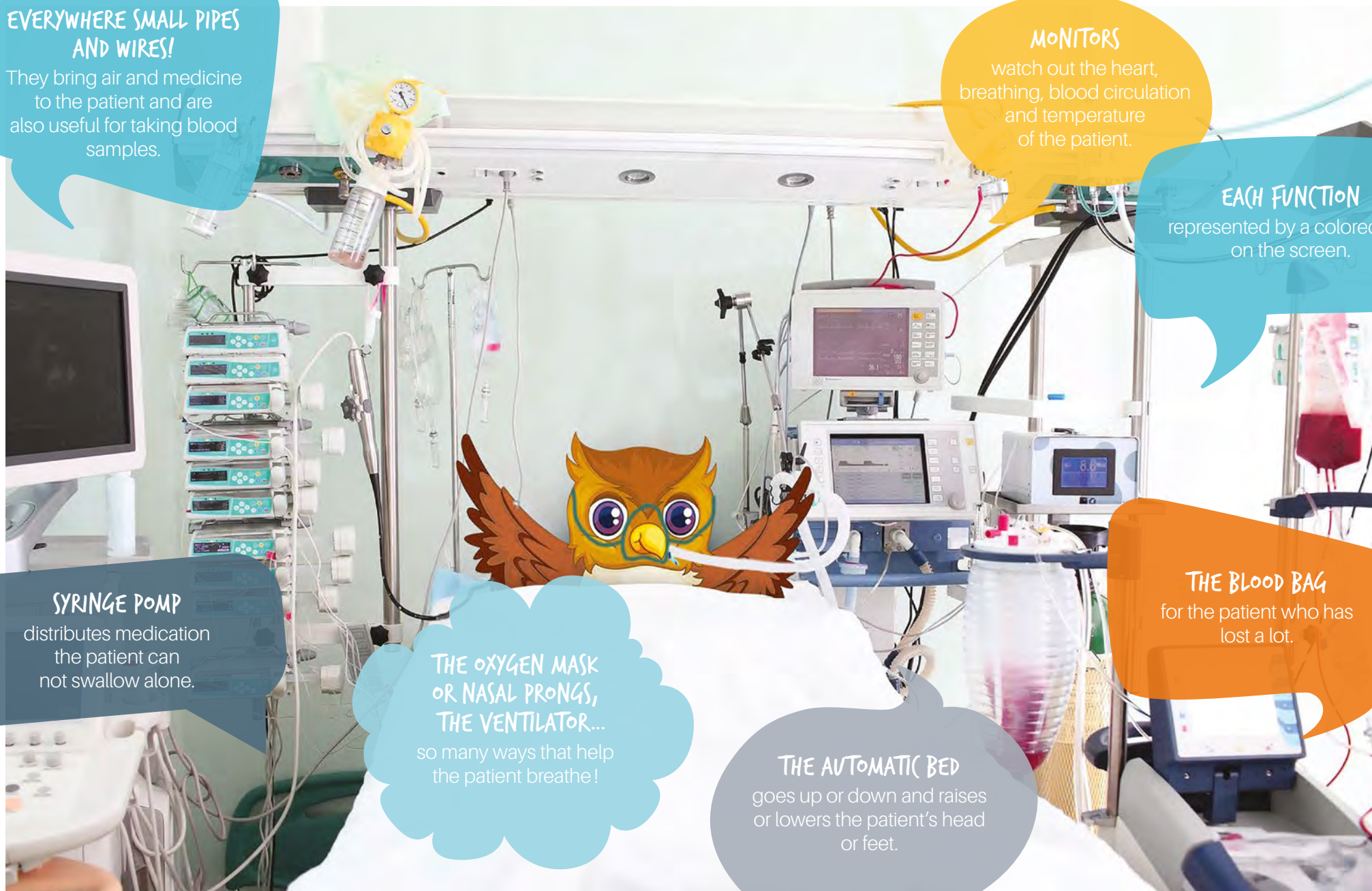
so many ways that help the patient breathe!

THE AUTOMATIC BED

goes up or down and raises or lowers the patient's head or feet.

THE BLOOD BAG

for the patient who has lost a lot.



CLINIQUES
DE L'EUROPE

EUROPA
ZIEKENHUIZEN

advanced care - personal touch

PERSONAL APPROACH
RESPECT
EXPERTISE
EFFICIENCY
CUTTING-EDGE MEDICINE

The Europe Hospitals are a leading hospital group serving Brussels and the surrounding area. As a multilingual general hospital, we offer comprehensive care at our three sites: St-Elisabeth in Uccle, St-Michel in Etterbeek/European district and the Bella Vita Medical Center in Waterloo.

Thanks to close cooperation between our 300 physicians and our 1,800 of staff, every day we care for almost 2,500, giving precise diagnoses, providing suitable treatment and ensuring appropriate and personalised care. To do this, we use cutting-edge medical technology in a modern infrastructure that enables us to offer every patient high-quality care in total safety and the greatest possible comfort.

www.europehospitals.be

St-Elisabeth site

Avenue de Frélaan 206 - 1180 Brussels

 02 614 20 00

St-Michel site

Rue de Linthoutstraat 150 - 1040 Brussels

 02 614 30 00

Bella Vita Medical Center

Allée André Delvaux 16 - 1410 Waterloo

 02 614 42 00

External Consultations Halle

Bergensesteenweg 67 - 1500 Halle

 02 614 95 00